



FRAMPTON FOCUS

OCTOBER/NOVEMBER

2019

Vicar of Frampton Reader www.framptonchurch.com	Rev. Sarvananthan John Marshall	01205 369515 01205 723097 john@jdmarshall.net
PCC secretary	Gaye Woodward	01205 722475
St Michael's Deputy Church-warden	Val Marriott	01205 822917
St Mary's Churchwardens	John Cooper	07967 559818
Friends of Frampton Churches (FoFC)	Group email	fofc@outlook.com
St Michaels Hall	Keith Scott Myra Scott	01205 722013
Frampton Village Hall Book-ings	Joanne Plummer	07902510126
Frampton Focus	Focusonframpton@outlook.com	
Editor/Advertising	Vanessa Jameson 07955 763473	
Distribution	Carol Patrick 07971 761205	
Parish Council Chairman	Peter Burton	01205 722878
Parish Council Clerk	Alison Clarke	01205 612120
Kirton Police Station	PC Martin Appleby	01205 722002 / 07500 920446

Keep Fit Over 50's	Sue	310537
Pilates	Maxine	07855 377939
Hand Bell Ringers	Maria	722191
Keep Fit and Dance and Beginners Tap	Jo Sutton	723971
Mothers Union	Margaret	368327
Friends of Frampton Churches	John C	07967 559818
Gardening Club	Ray	723181
Frampton WI	Carol	722879

KEEP FIT

A reminder — Tuesdays at St. Michaels at 10.30am, great fun with Sue Cadman of Les Dawson`s Roly Polys, keep fit to music and dance. Very friendly bunch of mature ladies (over 50). £4 per session, do join us!!!

be delicious!

with
Slimming World

Monday

Wyberton Parish Hall
9am & 11am
With Sarah on 07814 233968

Kirton Town Hall
5pm & 7pm
With Abion 07538 819472

Tuesday

Mayfields Boston
5pm & 7pm
With Sarah on 07814 233968

The Ruby Hunt Centre
Donington
5.30pm & 7.30pm
With Pam on 07880 557845

slimmingworld.co.uk

Wednesday

Swineshead Village Hall
5.30pm & 7.30pm
With Abion 07538 819472

St Thomas Church Hall
5.30pm & 7.30pm
With Gary on 07789 986722

Thursday

The Ruby Hunt Centre
Donington
9.30am & 11.30am
With Pam on 07880 557845



0344 897 8000



COFFEE MORNING

at

St. Michael's Hall
Frampton West

on

Sat. 2nd. November
10am----12pm

Tickets £2 (inc coffee & Cake)

Raffle

Tombola

Cake Stall



Bobby Green Tribute act sings Neil Diamond Buddy Holly + Robbie Williams

Friday 25th Oct at 7.30pm

St. Mary's Church
Frampton

Tickets: £5 on door

Bring your own drink



Charity No. 1155299

Editor...Dear Reader



Frampton Marsh by Martin Reynolds


Grazing through social media in a spare moment, I came across a debate on council chains of office, the cost, and necessity. I'm not suggesting existing chains of honour are melted down and sold for funds but in this day and age do we really need to purchase new or replacements? When I need people to know who I am, I wear a small badge with my name and position, this is low cost, and when we struggle with funding for street lighting, grass cutting, policing, road maintenance, schooling, no contest in my

humble editorial opinion, what do you think? What I wouldn't give right now for a slice of this month's recipe to go with my coffee! There is no book review this month but Graham Rodwell has promised to write one for an upcoming edition—no pressure Graham! Instead please check out page 11 for details of a book with a big story ...We have two new advertisers this month Karl Royce - I read his advert and thought immediately about Christmas presents, and Nine Oaks Contractors who seem to be able to do almost anything in and out of the garden. Frampton United Charities have a deadline of 31st October for applications, please don't miss it if you are thinking of applying. And Mrs Maidens, I have no contact details for you, but I wanted to say a huge thankyou for your very kind contribution towards our running costs. Thankyou also to Martin Reynolds for his photos of Frampton Marsh. Its lovely to have local artwork to include in the magazine. It was with very great sadness that I heard of the death of Eileen Smith, what a wonderful amazing lady she was, Ann Pilbeam has written about her in this edition.

I should update you all on where you can find a magazine if you are not getting one delivered. We now have supplies in the Co-Op at Kirton, Paulas Gifts, Kirton Cottage, Allen Briggs and Turner—vets, Boston Crop Sprayers, The Kirton Medical Centre, St Marys Church, St Michaels Church, Frampton Village Hall, and Kirton Library. If you are still having a problem give me a call I may have a few spare. If you don't get a delivery where you live and would like to deliver a few magazines in the Frampton area please call me or Carol and we can supply you with some!

Lastly I really cant go without thanking everyone who sent me emails about my editorial last month! If I had known what effect mentioning 'sex' would have, I would have done it years ago!

Vanessa Jameson

MONDAY	TUESDAY	WEDNESDAY	THURSDAY	FRIDAY	
 <p>Pilates and personal fitness with BODY MAX maxine.bodymax@btopenworld.com M: 07855 377939 T: 01205 723936 Like us on Facebook!</p> <p><i>Small Groups & Personal Training available in the Studio or in your own home</i></p> <p>Class Prices: £4.00 (Not Pilates) 10th Class FREE!! with Loyalty Card</p>	<p>PILATES 9.00am - 10.00am BLOCK BOOKING KIRTON LEISURE CENTRE Willington Road PE20 1EP</p>	<p>PILATES 9.00am - 10.00am BLOCK BOOKING KIRTON LEISURE CENTRE Willington Road PE20 1EP</p>		<p>PILATES 9.00am - 10.00am BLOCK BOOKING KIRTON LEISURE CENTRE Willington Road PE20 1EP</p>	
	<p>PILATES 10.30am - 11.30am BLOCK BOOKING STUDIO Kirton End</p>			<p>PILATES 10.00am - 11.00am BLOCK BOOKING KIRTON LEISURE CENTRE Willington Road PE20 1EP</p>	<p>• PILATES - block booking, small groups Strong mind and body connection. If you like yoga but need a more intense core workout then Pilates is for you. Improve posture by a series of low repetition, low impact, strengthening and conditioning exercises.</p> <p>• AEROBICS (Those were the days). Get back in shape with the sounds and the energy you've got locked away that you thought you'd lost. Believe me you can still shake your rump to the funk and some of these new sounds are pretty good to move to as well 😊</p> <p>• LBT PLUS A workout for leaner legs, brilliant bum, toned tummy and amazing arms. The four areas that give us the most grief!</p> <p>• WICKED WEIGHTS WORKOUT Learn how to use weights safely and effectively. Suitable for all levels of fitness, male & female. WOMEN SHOULD USE WEIGHTS.</p> <p>See "Bodymax" Facebook Page for classes up to 3rd Sept</p> <p>ALL CLASSES SUITABLE FOR ALL FITNESS LEVELS. CLASSES SUBJECT TO CHANGE</p>
	<p>PILATES 12.00pm - 1.00pm BLOCK BOOKING STUDIO Kirton End</p>			<p>PILATES 1.00pm - 2.00pm BLOCK BOOKING STUDIO Kirton End</p>	
<p>MEN ONLY PILATES 6.15pm - 7.00pm KIRTON LEISURE CENTRE Willington Road PE20 1EP</p>	<p>PILATES 6.00pm - 7.00pm BLOCK BOOKING KIRTON LEISURE CENTRE Willington Road PE20 1EP</p>	<p>LBT PLUS 6.30pm - 7.15pm KIRTON LEISURE CENTRE Willington Road PE20 1EP</p>	<p>PILATES 6.15pm - 7.15pm BLOCK BOOKING KIRTON LEISURE CENTRE Willington Road PE20 1EP</p>		
<p>BOX FITT 7.15pm - 8.00pm KIRTON LEISURE CENTRE Willington Road PE20 1EP</p>	<p>AEROBICS 7.15pm - 8.00pm KIRTON LEISURE CENTRE Willington Road PE20 1EP</p>	<p>WICKED WEIGHTS WORKOUT 7.15pm - 8.00pm KIRTON LEISURE CENTRE Willington Road PE20 1EP</p>	<p>AEROBICS 7.15pm - 8.00pm KIRTON LEISURE CENTRE Willington Road PE20 1EP</p>		
			<p>"M.Body Personal Training" ONE-2-ONE TRAINING</p> <p>Everyone is an individual, achieve your goal!</p> <p>Whatever your fitness level or experience is, personal training is tailor made for you from losing a few pounds, preparing for a special occasion or training for a major event.</p> <p>Contact me now to discuss the right programme for you!</p>		

Karl Royce Art

Quality Animal and Pet Portraits

Mobile: 07841215334
Home: 01205 820008




karlroyceart@outlook.com Karl Royce Art

Frampton WI



Frampton WI have had their annual Summer break, with no meeting in August, but nevertheless there has been plenty to keep members busy!

A trip to Cambridge was enjoyed by a selection of members, and they certainly made the most of their day. Some did a bit of retail therapy, others had a walking tour of the city and colleges, and then topped it off with a cocktail or two!

Another thoroughly enjoyable day was a trip to Chatsworth Country Fair - the weather was kind and a wonderful time was had by all who went. I hear that lots of walking was done, as there was so much to see, with some recuperation with tea and cakes, before being able to rest their weary legs on the return journey back to Kirton.

Some of our members are now meeting up once a month, on a Saturday morning, for coffee and cake – at The Mallard, and this is yet another chance to catch up with friends.

Our first meeting back, after the Summer break, had the feeling of a new term about it – lots of excitement and anticipation of the meetings to come. We were lucky to hear all about rope work – a traditional skill which is sadly in decline. After hearing about the fascinating background around the history of making rope and the different knots used, we had the opportunity to try it out for ourselves, in a very small way – making a keyring. Such concentration! There was lots of going wrong, undoing and then helping each other out, but by the end, most of us had produced something to be proud of.

We have very lively, informative and fun meetings, and our membership is continuing to grow. We are always pleased to welcome more members, so why not come along to see what we do? Meetings are held on the second Thursday of each month, starting at 7.30 pm at Frampton Village Hall. Your first visit is free, and you will be assured of a very warm welcome.

Janice Cotgreave

Vanessa Jameson on 07955 763473 vanessajameson@btinternet.com

Gillian McBride on 07845931770 gillianreece774@btinternet.com

Janice Cotgreave on 07957 904464 Janice.cotgreave@btinternet.com

THE
POACHERS
COUNTRY HOTEL

YOUR UNIQUE
WEDDING VENUE

*Exclusive hire of our beautiful venue
for your dream wedding!*



Enjoy your special day in our picture perfect venue which includes; a stunning contemporary function suite, garden house marquee leading onto an enclosed landscaped garden, 14 beautiful on-site bedrooms and a mouth-watering dining experience using the best local quality produce.

Included in your booking is a complimentary overnight stay for the happy couple in our exclusive honeymoon suite, ending your special day in style!

Our experienced wedding coordinator offers support every step of the way to create your perfect day!

*Contact us for more information
or to take a look around our venue!*

01205 290310
weddings@poachershotel.co.uk
poachershotel.co.uk

The Poachers Country Hotel,
Swineshead Road, Kirton Holme,
Boston, Lincolnshire PE20 1SQ



Kirton Kids Club



Do you need – good affordable childcare for each end of the school day? Look no further – **KIRTON KIDS CLUB** runs from 7.30am to 5.45 pm each day that Kirton Primary School is open.

Children are given a choice of menu in the morning plus a drink and after school a 'high tea' and drink as well as oodles of other options with celebrations and parties included.

Breakfast club is £4.00 per child per session and after school is £6.00 per child per session with a 10% discount for related siblings attending the same session. Children enjoy an 'Aladdin's cave' of toys and equipment to use, plus indoor and outdoor activity areas.

For more information about availability of places, please phone 07583 762072 and book a free taster session where you can have a good look around while you stay and watch how your child enjoys the club and surroundings. Or take a look at our website at www.kirtonkidsclub.co.uk

T. GRAHAM & SON

Professional Painters & Decorators



Interior & Exterior Painting

Coving & Wallpaper



Quality, Reliable, Friendly Service

Contact us for your free estimate

01775 820 923 / 07711 310989

Email: markgraham72@aol.com





Kirton Cottage

15 High Street, Kirton, PE20 1DR

tel:01205 722311

bookings@kirton-cottage.co.uk

Lunch Menu

Starters

*Soup of the Day, Warm Bread Roll
Game Pate, Salad Leaves, Toasted Brioche
(Supplement £2.00)*

*Classic Prawn Cocktail
Mango and Brie Parcels, Salad Leaves
Deep Fried Brie Wedges, Salad Leaves*

Mains

*Roast Pork, Crushed New Potatoes, Apple Gravy
Bennett's Finest Lincolnshire Sausages, Red Wine Sauce
Vegetable Curry, Aromatic Rice
Pan fried Salmon Fillets, Parsley Sauce
(Supplement £3.00)*

Desserts

*Lemon Sponge Pudding, Custard
Cheesecake of Day, Cream
Treacle Tart, Cream
Dark Chocolate and Caramel Tart, Cream
Caramel Apple Pie, Vanilla Ice Cream*

Two Course £13.00, Three Courses £16.00

Puzzle Page

		9	6			7	2
				3			5
	1		2				
	5				9		
8	3				4		6
	7					2	
				2		9	
4		3					
1	8			4	7		

© 2011 KrazyDad.com

Sudoku 1 medium difficulty

RSPB have taken a holiday month from contributing so please enjoy these puzzles courtesy of Parish Pump.

D	U	M	N	R	O	C	M	O	N	D	R
S	N	A	E	E	S	I	A	R	P	C	P
E	K	T	T	A	S	E	R	I	R	L	N
P	A	C	F	G	D	R	R	C	D	A	N
W	U	H	O	S	N	O	O	H	O	O	W
O	D	M	S	L	N	I	W	E	O	V	B
C	R	O	P	S	F	H	S	S	F	E	S
A	K	E	T	K	E	K	N	S	L	R	E
R	R	R	R	A	I	N	S	R	E	F	A
E	A	O	T	H	A	N	K	F	U	L	M
C	G	O	O	D	N	E	S	S	S	O	B
D	E	C	N	A	D	N	U	B	A	W	N

Word Search



The previous month's Harvest Festival donation from the Genetic Modification research laboratory was proving to be a useful stop-gap until the steeple restoration fund reached its target

		1	9		6			3	
8	5					2	1		
		3		9				6	8
	8					9	3	7	
3	9			7				2	1
	4	1	5					6	
	6	4				1		5	
		3	4					1	6
	7			5				2	4

© 2011 KrazyDad.com

Sudoku 2 easy

Sudoku 2

9	2	4	9	6	5	3	8	7	1
6	8	1	6	3	4	9	7	8	5
3	7	5	3	9	6	4	2	8	9
8	9	6	8	7	5	2	3	4	7
1	2	4	8	7	6	5	9	3	8
5	7	3	6	2	1	4	9	8	6
2	8	6	5	1	9	7	3	4	8
4	9	1	8	6	7	5	2	3	9
7	3	1	9	4	8	6	7	5	2
3	5	4	2	8	6	9	1	7	3

D	E	C	N	A	D	N	U	B	A	W
O	G	O	O	D	N	E	S	S	O	B
E	A	O	T	H	A	N	K	F	U	L
H	R	R	A	I	N	S	R	E	F	A
A	K	E	T	K	E	N	S	L	R	E
C	R	O	S	F	H	S	S	F	E	S
O	D	M	S	L	N	I	W	E	O	V
W	H	O	S	N	O	O	H	O	O	W
P	A	C	T	A	S	E	R	I	R	L
S	N	A	E	S	I	A	R	P	C	P
D	U	M	R	O	C	M	O	N	D	R

Answers to the puzzles
on opposite page

Sudoku 1

1	8	2	9	6	4	7	5	3
4	9	6	3	5	7	2	8	1
3	7	5	8	1	2	6	9	4
9	4	7	1	3	6	5	2	8
8	2	3	5	7	9	4	1	6
6	5	1	4	2	8	9	3	7
7	1	4	2	8	5	3	6	9
2	6	8	7	9	3	1	4	5
5	3	9	6	4	1	8	7	2



Help needed...can you put a smile on Mariam's face?

Can you make room for an international student to experience true British Festive hospitality? Hosting an International student will bring a whole new dimension to your Christmas, with a

chance to learn about another country's traditions and enjoy the connection and friendship that such sharing brings.

HOST UK arranges for international students to enjoy brief visits-one day, a weekend or, over the festive period, a three-day visit, with UK hosts. We warmly welcome new volunteer hosts to join us.



To learn more, go to our website www.hostuk.org or leave us a message on <http://visits.hostuk.org/Public/ApplyToBecomeAHost>

"ON STAGE IN FRAMPTON" SATURDAY 30th NOVEMBER

FRAMPTON VILLAGE HALL

MIDDLEGATE ROAD FRAMPTON NEAR BOSTON LINCOLNSHIRE PE20 1AR

Shorrel Jade

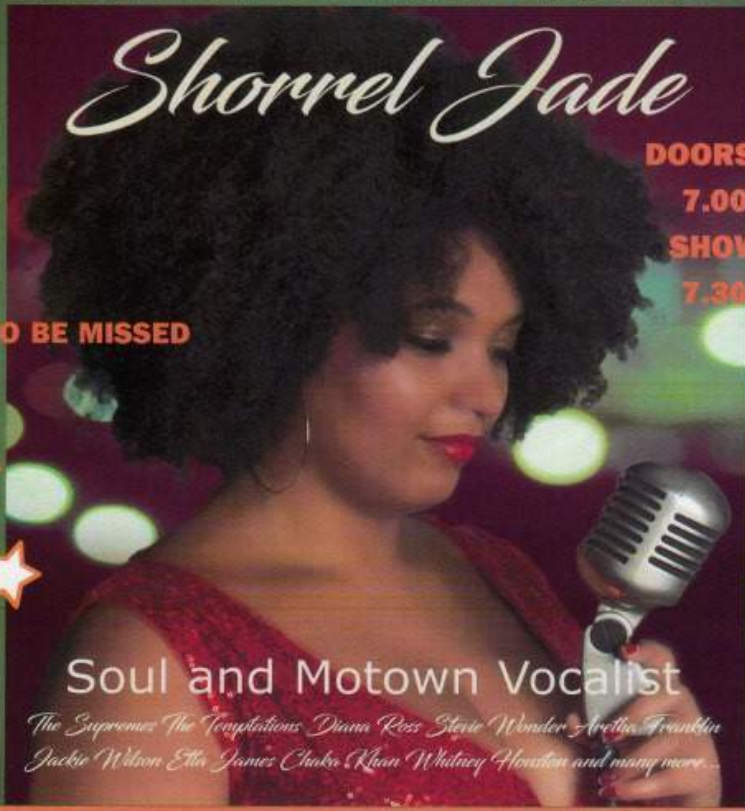
DOORS OPEN

7.00 p.m.

SHOWTIME

7.30 p.m.

NOT TO BE MISSED



Soul and Motown Vocalist

*The Supremes The Temptations Diana Ross Stevie Wonder Aretha Franklin
Jackie Wilson Ella James Chaka Khan Whitney Houston and many more...*

ADMISSION BY TICKET ONLY £9.50

TICKETS AVAILABLE FROM KIRTON FLOWER SHOP, STATION
ROAD, KIRTON or by telephone 01205 722013

BRING A 'BOTTLE' - HAVE SOME FUN !

CIVIL COMMUNITIES ENTERTAINMENT NETWORK

Tel. 01522 874246 01332 743049 07762 222210 07775 726524

Registered Office : 7 Belvoir Close Lincoln LN5 6DG Email : tonyr.ccen@outlook.com



St Marys 100 Club

August £25 No. 1 Mr R. Reams

September £25 No. 94 Mr C. Woodward

Entry for the draw costs only £1 a month and can be paid monthly, yearly or any amount in between, and you can join at any time of the year. Almost half the money received is returned in prizes – one prize of £25 each month plus a £40 prize in December and April, the latter being the last month of the Draw year. If you would like to take part please contact Joan Deane on 01205 722744.

Frampton History Group—Autumn 2019

Monday October 7 – Milestones with Roy Knight

Roy is a founder member of the Milestone Society and has been highly recommended by members of Gosberton History Group.

Monday October 14 – Nostalgic Boston Part 2 with Roy Hackford

Part 1 was a fascinating glimpse into Boston`s past and Roy said then that he had many more photos.

Monday October 28 – English Country Houses with Pat Pomeroy

In recent years Pat has been able to visit houses not normally open to the public and will show us some of her favourites.

N.B. These are not all consecutive Mondays.

We meet in St Michael`s Hall, Frampton West, at 7.30pm and everyone is very welcome. The cost is £3.50 a talk or £9 for all three. For more details contact Joan on 01205 722744.

Eileen Smith

It was with disbelief that we heard of Eileen's sudden death.

On Sunday, 5th August, we heard how Eileen had fallen in Kirton and had broken her wrists, resulting in both of them being put in plaster. I rang her that afternoon and we chatted for such a long time and she was so bright and positive. Eileen was the loveliest lady and so smart and fashionable. I told her of one of my shopping trips and how I had resisted the temptation to buy an outfit, she smiled at me and said "Ann, I can always make a space in my wardrobe for one more outfit!" When Eileen attended events at her grandchildren's schools, she was known as "Glam Gran"

Eileen was a pivotal member of the cleaning gang at St Marys. She would always drop everything if extra cleaning was needed. She often arrived with freshly baked cakes to go with our morning coffee break. Very quiet and totally unassuming in all she did in church, many people had no idea of her input into the life of our church. Eileen, sometimes with the help of her daughter, made sure that pedestal flower arrangements were done for all the major church festivals, especially at Christmas. My Rob and John Cooper used to go to her 'Christmas Tree Plantation' and cut down a tree for the church.

At her funeral John Marshall delivered a remarkable eulogy telling us of Eileen's many activities throughout her life. Love of sport, love of history and fine arts, love of flowers and a love of travel all around the world. She was also a member of so many organisations and societies. My! It left you breathless!

There must have been over two hundred people in church. What a testament to a very remarkable lady.

Eileen leaves a huge void in our church family at St Marys.

Ann Pilbeam

Frampton United Charities

ATTENTION ALL STUDENTS

Students who will be attending courses of Higher Education in the academic year of 2018/19 are invited to apply for a student grant. Students must be **under 25 years of age and have been resident in Frampton for 5 years at the time of application**. Application forms are available from the Clerk at the address below and should be submitted no later than: **31 OCTOBER 2019**

Clerk to the Trustees: Louise Bacon, 26 Nursery Way, Spalding, Lincolnshire, PE11 1GD

Email: louise@mooret.co.uk

ATTENTION ALL CLUBS, ORGANISATIONS ETC

The Trustees of Frampton United Charities are inviting applications from clubs, organisations etc in Frampton to apply for a grant. Applications should be made in writing to the Clerk and submitted no later than: **31 OCTOBER 2019**. Anyone knowing of an individual case where the Charities may be of benefit may contact the Clerk at any time.

Clerk to the Trustees: Louise Bacon, 26 Nursery Way, Spalding, Lincolnshire PE11 1GD

Email: louise@mooret.co.uk

Senior citizens currently living in the Parish of Frampton, who are **65 years or over** and having been in resident in **Frampton for 5 years** at the time of application are invited to apply for assistance with their 2019/20 Winter electricity accounts. Applications must be to the clerk at the address below **by: 31 OCTOBER 2019**. On your application, please quote the following:

- Full name and address
- Contact telephone number
- Date(s) of birth

Further particulars may be required upon request.

Clerk to the Trustees: Louise Bacon, 26 Nursery Way, Spalding, Lincolnshire PE11 1GD

Digby Military Wives Choir visit Frampton

Frampton was treated to a wonderful afternoon of singing on the 18th of August when Digby Military Wives Choir visited the village.

12 ladies from RAF Digby, some military wives, some military servicewomen and the Conductor Harriet Smith, a music teacher and former conductor of Waddington Military Wives Choir arrived in the village that afternoon expecting to perform in the gardens of Frampton Hall.



Some anxious weather watching over the previous 48 hours determined a last minute change of venue and St Marys Church opened its door to the choir and the audience, guaranteeing a dry and wind free afternoon. Cream teas served at the interval were thoroughly enjoyed and with great expectation we took our seats for the second half, and were not disappointed. The music ranged from classical to modern to songs from the movies and stage. The characters of the individual choir members shone through and most of them had a solo at some point in the concert. It cant be denied that it was disappointing not to have had it held in the gardens at Frampton Hall, but Lady Davies invited all those present to cross the road after the concert and wander around the gardens. I asked Harriet if she would have preferred the gardens as a venue and she said yes for the sunshine and the setting but added that the acoustics in the church were wonderful and so all was not lost!

A very big thankyou to Friends of Frampton Churches for organising this and many other activities for our village, please support them at future events.

Vanessa Jameson—very proud Godmother of Harriet!

ST MICHAEL'S CHURCH HALL

£6.50 per hour for regular bookings

£8.00 per hour for a single booking

For details phone Myra or Keith on 01205 722013

LOCAL HANDYMAN

- Man with a van, collection and pickup of items
- Fixing and mending fences, building sheds
- Garden work
- House clearance
- Putting up shelves to building porches and carports!
- Help with moving
- Maintenance for rented properties
- No job too small



Call Jaco on 07975 715663, or call 01205 619055, email epetals@aol.com (*the friendly local South African*)

By hour if cheaper, reasonable and affordable rates

Dog kennels made to size of dog



Sheds and tree houses



Outdoor kitchens and carports



CHOOSING A MORTGAGE?

Is it the right option for you?

Let us help you.

There are thousands of products to choose from and following changes to the way lenders assess loan applications the process can be time consuming and confusing.

So how can you make sure you pick the right option for you?

It's a daunting process if you're doing it alone.

So let us help you.

We're professionals. We have the tools, market knowledge and access to exclusive mortgage products.



YOUR HOME MAY BE REPOSSESSED IF YOU DO NOT KEEP UP REPAYMENTS ON YOUR MORTGAGE.

To learn more about how we can help contact:

T: 01205 336110

E: robert@robert-barclay.co.uk

24-28 South Street, Boston, PE21 6HT

Jerry Green Dog Rescue, A16 / A17 crossroads (Sutterton Roundabout)



- We held our annual Summer Show on Sunday 1st August. The weather was perfect, other than a brief shower in the middle of the day. The car park was full and the Fun Dog Show ring was too for some of the classes. It was a great event to come and see our facilities, enjoy a family day out, and to help support the dogs in our care. Thank you to all who attended or supported the event.
- We are available for talks, or to attend coffee mornings or other social meet-ups. If you'd like to know more about what we do, how we care for our dogs, and how you can help us please book us in.
- Have you ever thought it would be nice to do some volunteering, but don't have the time for a regular commitment? Maybe you could join our Events team to help us at fetes and fairs, markets etc. on an ad hoc basis.
- We desperately need tombola items please – if you have any unwanted dog toys or treats, homeware, smellies, notebooks, gifts, bottles of wine etc we would be very grateful for them. They must either be new or unused please. We also sell “pre-loved” dog items for donations, so if you have dog beds, bowls, leads, toys etc we can use those too.
- Did you know you can help Jerry Green Dog Rescue whilst you shop online? Register with Give As You Live for free and raise funds by shopping at any of over 4,300 stores simply by clicking through their website. To register go to www.giveasyoulive.com

To contact us regarding any of the above please call Liz on 07921 471577, or email liz.hinckley@jerrygreendogs.org.uk

- At the Centre we have secure compounds for hire, a pavilion / meeting room available for hire, groomer, and dog trainer, and agility equipment. Call 01205 260546, email slincs@jerrygreendogs.org.uk for more information.

CAMEO (Come And Meet Each Other)

A social group for all ages, Meets every Wednesday 10.30 am to 12pm
£1 for unlimited tea/coffee/cake and optional activities.

St Michaels Church Hall, Frampton West

Tel: Carol Kane 01205 722116

Steve Tetter

For all your Joinery, Building and
Property Maintenance needs,

Commercial & Domestic

Very Competitive Rates

For your free estimate

Contact Steve

Telephone: 01205 722703

Mobile: 07976 260975

Email:

steve@sjtservicesltd.co.uk



A & S Landscape

Fully Qualified & Insured

All aspects of landscaping work
under taken including:



Turfing
Grass Cutting
Tree pruning
Hedge cutting
Patios & more
Based in Frampton

07778 305768

Email: batesma@hotmail.co.uk



Allen, Briggs & Turner

Veterinary Surgeons

*"A dedicated team committed to the
welfare of your pets for over 40 years"*

**We provide our own
in-house out-of-hours
emergency service**

Orthopaedic referral
service for over 30 years

Tel: 01205 722696

36 Boston Road, Kirton, Boston, Lincs. PE20 1DS

www.elwoodbriggsandturnervets.co.uk

Appointments available Monday to Saturday

elwoodandbriggs@hotmail.co.uk

Shop for your pets needs in
our dedicated retail area.
A range of products and services
for your pets.

Find us on
Facebook



Frampton Parish Council

Hello Parishioners!

It's been a busy Summer despite the Parish Council not meeting in August. Several residents have contacted me about various problems including over-grown trees, ragwort in a neighbouring field and farmers damaging private property.

It is becoming more and more apparent that the Parish relies on the Local Community to alert us to problems or situations. The Parish will always help where we can but cannot get involved in civil disputes or influence either the Borough or County Council to fix problems or issues sooner.

There is a wealth of information on the Parish website – parish-es.lincolnshire.gov.uk/Frampton including a list of Planning applications, road closures, bus timetable etc. Also the agenda for the next meeting is published on the website normally five to six days prior to the meeting plus the minutes of the meeting (draft where not yet resolved) so everyone can see what topics the Parish discusses.

Please feel free to contact me on either 01205 612120 or email me at framptonparishcouncil@yahoo.com

Alison Clarke

Frampton Parish Clerk

A Week in the Life of a Parish Council Chairman

Each morning I start my day by checking e-mails from Alison, the Parish Clerk. There are e-mails most days of the week. These may be general ones from organisations such as Lincolnshire Association of Local Councils (L.A.L.C.), Boston Borough Council, (B.B.C.), various departments of Lincolnshire County Council (L.C.C.) or individual Parishioner issues.

This may require me to respond to Alison or to the relevant sender on the issues involved with a course of action I, or the Council, may wish to take. It may be something that can be dealt with by Alison or myself or may need to be discussed by full Council and so be added to the Agenda for the next meeting.

Other correspondence I receive on a weekly basis are details from the Borough Planning department. This consists of weekly planning applications and also results of determined decisions ruled on by the Planning Committee. Over a period of a week I may take a call or visit from a Parishioner with an issue they wish to raise and so then I need to respond to the situation. I then may need to meet with or discuss a situation with fellow Councillors.

Though not on a weekly basis, I will at various times through the year attend regularly, Liaison meetings, Chairman and Clerk meetings and Chairman and Vice/chair meetings at Boston Borough Council. I also attend training days through L.A.L.C. for Councillors on many aspects of being a Councillor, these can be at various venues.

In conclusion, I find the position varied and fulfilling and sometimes taxing. However, meeting and communicating with people and acting as an advocate for Parishioner when able is the most rewarding part of the role.

Cllr. Pete Burton (Chairman) Frampton Parish Council.



YOUR PARISH NEEDS YOU! HOW WOULD YOU LIKE TO MAKE A REAL DIFFERENCE IN YOUR COMMUNITY?

Following the recent local Parish elections Frampton Parish Council has vacancies for a further three Councillors after the retirement of three long serving Councillors.

Local Councils are becoming one of the most important parts of local government as they are closest to the people and cover issues that really matter in a time of real disenchantment.

Frampton will be undergoing a huge change with the building of the new development in Middlegate Road. Our demographics will alter and new opportunities for the Community will arise.

Frampton Parish Council meet ten times a year at 19:30 on the third Thursday of each month. Councillors are expected to report on local issues such as the environment, and make collective decisions with regards to planning applications, financial planning etc.

If you think you would like to serve your Community and contribute towards the local environment please contact Alison, Clerk to Frampton Parish Council on 01205 612120 or email framptonparishcouncil@yahoo.com. Please also have a look at our website parishes.lincolnshire.gov.uk/Frampton which also has a section on Parish Elections and vacancies. Or why not attend one of our meetings to observe how the Parish Council meeting is conducted?

Focus on Faith

It was a shoemaker in Northamptonshire who gathered a few friends and discussed with them about a whole world that was without Christ. He had a little globe of the world, which he had made out of bits of scrap leather and which he used to pray over, and the shoemaker asked his friends, "What are we going to do?" They prayed together and God spoke to them and said, "Take a collection and start a missionary society." They took a collection. It was about four pounds (a significant sum of money in 1792). The Baptist Missionary Society began that day in that room. It was the first missionary society in this country. Within a few years there was a London Missionary Society, a Church Missionary Society, a British and Foreign Bible Society and Wesleyan Missionary Society established. Missionaries were going out from this land to many parts of the world. But it started with a cobbler calling a few friends together and listening to God. It was non other than William Carey.

Nobody knows what might happen if a few people get together and mean business with God and say, "Lord, if you want to tell us something, then tell us." One of the results of that little meeting 1792 was that William Carey had to go to India.

We are planning 24X7 Prayers for a week in October. Please check the website or on Facebook for the actual date. But in the meantime we will be praying every Wednesday, Thursday and Friday at 9 am at Wyberton Church.

Please email any prayer requests to sudhashan@wybertonandframpton.org or by post to; The Rectory, Church Lane, Wyberton. Please be assured of our prayers.

With every blessing
your friend and pastor

Sudharshan

<http://www.wybertonandframpton.org/>

<https://www.facebook.com/Wybertonandframpton>

SERVICES	ST LEODEGARS	ST MICHAELS	ST MARYS
October 6	HARVEST FESTIVAL 9.30 am	MP 8.30 am	HC 11.00am
October 13	HC 9.30am	-	HARVEST FESTIVAL 11.00 am
October 20	HC 9.30 am	BCP 8.30 am	MP 11.00 am
October 27	MP 9.30 am	HC 9.30 am	HC 11.00 am
November 3	ALL SAINTS 9.30 am	-	ALL SAINTS 11.00 am
November 10	-	-	REMEMBRANCE SUNDAY 11.00 am
November 17	9.30 am	BCP 8.30 am	MP 11.00 am
November 24	9.30 am	-	HC 11.00 am
HC Holy Communion	MP Morning Prayers	BCP Book of Common Prayer	

KIRTON METHODIST CHURCH

EXCHANGE DAY & COFFEE MORNING

2nd Saturday of every month 10 am—12 noon

Bring along books and jigsaws to exchange for alternative ones for free. If you don't have any to exchange you can get a book for £1 or a jigsaw for £2 and then exchange them for free the following session.

There will be adult and children sections so all ages are welcome. We will also have tea, coffee and biscuits to enjoy, so even if you don't want a book or jigsaw come along for a chat and coffee with friends and villagers.

All proceeds from these events will go to the church renovation fund. Donations of books and jigsaws for this event would be gratefully received. For more information on our church events starting from Saturday 14th September 2019 go to <http://www.kirtonmethodist.org>



**YOU'RE
INVITED**

Macmillan Coffee Morning

Saturday 26th October

10 am till 12 pm

Frampton Village Hall, Middlegate Road,
Frampton, PE20 1AW

Come and join us for Cake,
Coffee, Tea and Chat

Books, Raffle and a Bric a Brac stall
all contributions gratefully received!

LRS

CAR & LIGHT COMMERCIAL SPECIALISTS LTD



VEHICLE REPAIRS & INDEPENDENT AIR CONDITIONING SPECIALIST

Unit A Ropers Lane, Sutterton, Boston PE20 2HZ

Call us on **01205 461575** or **07833 705363**

- Car Servicing
- Car Repairs
- Light Commercial
- Clutch Replacements
- Auto Electrical
- Air Conditioning
- Tyres,
- Brakes,
- Exhausts
- Diagnostic Testing
- ECU programming
- Car Batteries
- MOT Repairs
- Engine Repair and Rebuilds
- Engine Tuning
- Courtesy vehicle

Email: mail@lrs-autorepairs.com Website: www.lrs-autorepairs.com



T. CLARK ROOFING

TILING, SLATING, FLAT ROOFING, REPAIRS FREE ESTIMATES

Contact Tom on **01205 615015** or **07919 411308**

roofing.clark@gmail.com **www.tclarkroofing.com**

Brookside, Holmes Road, Kirton Holme, Boston PE20 1SN

Sticky Gingerbread

Ingredients

- 110g (4oz) margarine or butter
- 150g (5 oz) black treacle
- 85g (3 oz) golden syrup
- 150ml (1/4 pt) milk
- 225g (8 oz) plain flour
- 55g (2 oz) brown soft sugar
- 2 eggs
- 1 teaspoon mixed spice
- 1 teaspoon bicarbonate of soda
- 4 teaspoons ground ginger
cinnamon and nutmeg (optional)



Method

Prep:1hr15min › Cook:1hr30min › Ready in:2hr45min

1. Preheat the oven to 140 C / Gas 1.
2. Warm the margarine or butter, treacle and syrup. Take off the heat, add milk and allow to cool. (It looks unappetising at this point, but fear not...)
3. Sieve dry ingredients into mixing bowl. Add treacle mixture and eggs. Beat well. Pour into a buttered and floured or lined 20cm square tin.
4. Bake in the preheated oven until a skewer inserted near the centre comes out clean, 1 1/4 to 1 1/2 hours.

Boston....The Small Town With a Big Story

The book launch and associated Symposium on 7th September exceeded expectations. Until 31st October the book is on sale at the £10 offer price at the Shodfriars Coffee Shop in the Market Place; Shodfriars is the prominent black and white building. After 31st October they will be sold at the list price of £12.95.

Richard Austin

NINE OAKS CONTRACTORS

Garden and Property Maintenance

FULLY INSURED, RELIABLE SERVICE,
FREE ADVICE & ESTIMATES

Grass cutting, Weeding, Hedge cutting, Turf laying, Fencing, Fence repairs, Patio laying, Painting and Decorating, inside and out, Small building work, General DIY/ handyperson type jobs and repairs ie curtain poles, shelves, flat pack assembly etc.

tel 01205 820016 mobile: 07877 711364
email:nineoaksconstruction@gmail.com

CORE ELECTRICAL SERVICES

DO YOU NEED A RELIABLE AND EXPERIENCED ELECTRICIAN?

- All electrical work undertaken
- Extra sockets to full rewires
- Local Domestic Installer
- NICEIC Part P registered

CONTACT LEE ON: 07960 388401
OR 01205 365202



find us on facebook

www.coreelectricalsboston.co.uk

SOLE TRADER &
SMALL COMPANY
SPECIALIST



BOOKKEEPING &
ACCOUNTANCY

QUALITY,
FRIENDLY
SERVICE

Deal directly with a person who understands your business structure and your needs.

Bookkeeping
Payroll
VAT

LOCAL BUSINESS BASED IN SUTTERTON

T: 07716678056
E: admin@dcbookkeeping.org
W: www.dcbookkeeping.info

Accounts Production
Personal Tax
Business Tax

FRAMPTON VILLAGE HALL available for hire
Call Joanne Plummer on 07902510126 (after 6pm please!)



UNIQUE EYECARE



UNIQUE INDIVIDUALS



UNIQUE YOU

INDEPENDENT FAMILY OPTICIANS

Eye Examinations - Contact Lenses - Ocular Health Scans
Children's Eyecare - Dry Eye Assessment and Treatment
Frame Styling - Designer Brands
Bespoke Handmade Frames



20 MARKET PLACE - DONINGTON - SPALDING - PE114ST

01775 821888

www.clarkeyecare.co.uk

INDEPENDENT AUDIOLOGY NOW AVAILABLE



architecture



t: 01205 875885 e: info@jmadarch.co.uk

www.jennymcintee.co.uk

Frampton Gardening Club



Autumn brings not only mists and cooler mornings, but harvest time and sunny, if shorter days, and thoughts of spring bulb planting, to provide a glorious burst of colour next spring. Gardening is all about planning for the next season, and as I dislike cold, wet winter days, I prefer to think about the promise of better weather. Appropriately, spring bulbs were the prizes

given to our winning members in the club's annual Produce Show in August, each category judged by all the members voting for their favourite. The cakes and jams were especially popular, with proper scrutiny given to flowers and vegetables as well. The Bill Castle memorial plate, awarded to the entrant gaining most overall points, was won by myself, a very exciting "first" for me, and a very unexpected one.



The September meeting on Thursday 26th, has had to be altered from the scheduled programme, the speaker Steve Lovell postponing for a later date. We are fortunate to have Sally Grant, the Lincolnshire Organiser for the National Open Gardens Scheme, kindly stepping in at short notice. The NGS provides unique access to over 3,500 private gardens in England and Wales, and raises impressive amounts of money for nursing and health charities. The charity is focusing this year on the importance of the role of gardening and gardens in helping to create a positive path to health, and raise awareness of the physical and mental health benefits of gardens and gardening.

The speaker for the October meeting is our Chairman Ray Harding giving a talk on the Amazing World of Mosses, a much underrated but fascinating species we all take for granted. In November we welcome the Stamford Cheese Company to give us a talk on, and the chance to sample, Christmas Cheeses. There! I've said it, the "C" word, I'm sure some of you will know exactly how many days to go! In the mean time, please come along to Frampton Gardening Club, on the last Thursday in the month at Frampton Village Hall, we start at 7.30pm and will give you a warm welcome, which for the first night is free.



Maggie Welberry

WEEDS TO TREES

LOCAL TREE SURGEON

All Aspects of tree and garden work undertaken by
NPTC Qualified tree surgeon with 15 yrs experience
Hedges , Stump Grinding, Grass Cutting, Fencing
Commercial & Residential grounds maintenance
Free quotations & advice. No job too small.
All Arisings removed **01205 722635 or 07908 468244**



Anyone wishing to donate towards the flowers at St. Michael's Church, Frampton West.
Please contact Val on 01205 822917

Date for your diary 2nd November 2019 Coffee morning at St. Michael's Hall

Advertise with the Focus
focusonframpton@outlook.com

Magazine Distribution

Carol Patrick
email: carolpatrick@gmail.com
tel: 07971 761205

Editor/Advertising/Accounts

Vanessa Jameson
email: focusonframpton@outlook.com
tel: 07955 763473

**Next Edition copy deadline is
19th of November at the latest!!
Advertising, Articles, Letters, Reci-
pes, Book Reviews, photos all
gratefully received.**

**Front Cover
St Michaels Church
by
John Marshall**

KIRTON COMMUNITY LIBRARY

The library run by welcoming volunteers is open to everyone, with a good selection of books and a greater range that can be ordered in.
We also have Talking Books, Computers which can be used for free and a printer/photocopier available.
You are able to become a member of the library for free (we will need to see i.d) this enables you to borrow upto 30 books at any time.



Opening hours are:
Tuesday 10.00 am to 1.00pm
Thursday 2.00pm to 4.00pm
Saturday 10.00am to 12 noon

**THE LIBRARY IS NOW
LOCATED OPPOSITE THE
JAGUAR DEALERSHIP ON THE
A16
IN THE NEW LIFE COMMUNITY
CHURCH,
THE JUNCTION, WASH ROAD,
KIRTON. PE20 1QJ**

You can Pop in and have a chat with us .like our Facebook page (kirton community library) or contact Frances on 07845 481621 or f_brooks@sky.com



Experienced veterinary and nursing team working with cats, dogs, rabbits, other small mammals and reptiles. Extensive facilities, please enquire about a no obligation tour of what we can offer you and your pets.

**Freephone
0800 779 7774**

Opening times

Mon-Friday 8.30am - 6.30pm
Saturdays 9am-12.30pm

Situated just off A16/A17

Sutterton Roundabout
Plenty of off road parking



Out of hours emergency services based on site

Waggoners Rest, Station Road,
Sutterton, Boston, Lincs, PE20 2LF

Visit www.suttertonvets.co.uk



Trade Windows of Boston

**Manufacturers and Installers of
Windows, Doors and Conservatories**

Visit our Boston Shop / Factory for the best quality products. Our made-to-measure, one-stop-shop Trade Windows products appeal to everyone from Tradesmen to Homeowners.

Upvc Windows, Doors and Conservatories
A-Rated Energy Windows with superb U-Values

Family Run Business
We Stock Fascias, Soffits, Guttering and ancillaries
Including silicones at Trade Prices



Call us on 01205 311119 Fax us on 01205 311451

Email us: sales@bostontradewindows.co.uk

Website: www.bostontradewindows.co.uk

Find us: Hamilton Way, Nelson Way Ind. Estate, Boston PE21 8TT

Facebook: Trade Windows of Boston @tradewindowsboston



FRAMPTON CRAFT FAIR

ST. MARY' CHURCH

FRAMPTON

SAT. 9TH NOVEMBER

10am---3pm

OVER 20 CRAFT & GIFT STALLS

+ TOMBOLA, RAFFLE, CAKES, FRESH VEG &

CHILDENS GAME

REFRESHMENTS SERVED

ALL DAY

